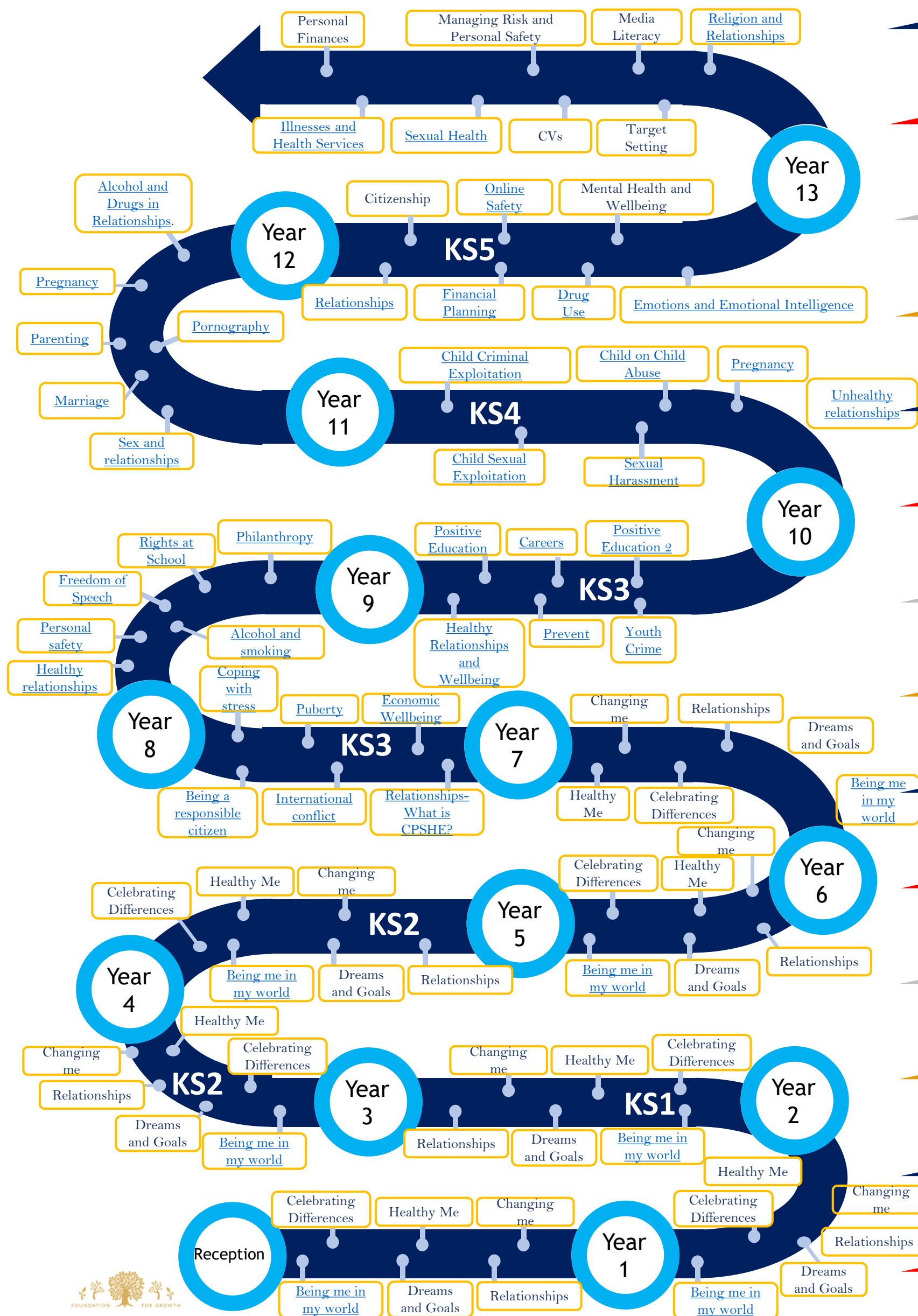


# PSHE- Learning Journey

Learners will develop their skills in a wide range of key themes from EYFS to KS5. Learners will develop knowledge on families, relationships, living in the wider world and health and well-being. Learners will also develop communication, listening and presenting skills throughout the curriculum.



- Year 13**  
Learners gain knowledge and understanding, skills, strategies and attributes they need for independent living and the next stage in their education or career.
- Year 12**  
Revisit and reinforce earlier learning through learning that 'connects' it to contexts that are relevant to learners, such as the workplace.
- Year 11**  
Learners reflect the fact that they are moving towards an independent role in adult life, taking on greater responsibility for themselves and others.
- Year 10**  
Learners deepen knowledge and understanding, extend and rehearse skills, and further explore attitudes, values and attributes acquired during key stage 3.
- Year 9**  
Learners learn to manage diverse relationships, their online lives, and the increasing influence of peers and the media.
- Year 8**  
Learners learn the differences between healthy and unhealthy relationships. And develop skills regarding the wider world as well as health and wellbeing.
- Year 7**  
Learners understand the changes that young people experience, beginning with transition to secondary school, the challenges of adolescence and their increasing independence.
- Year 6**  
Learners know that being different could affect someone's life, it can be a source of celebration as well as conflict. They know it is important to take care of their mental health.
- Year 5**  
Learners know that differences in culture can sometimes be a source of conflict. They know that a personality is made up of many different characteristics.
- Year 4**  
Learners try to accept people for who they are and identify influences that have made them think or feel positively/negatively about a situation. They know that change is a natural part of relationships.
- Year 3**  
Learners know that every family is different and conflict is a normal part of relationships. They know some of the skills of friendship.
- Year 2**  
Learners know it is good to be yourself and not conform to gender stereotypes. They know that families function well when there is trust, respect, care, love and co-operation.
- Year 1**  
Learners know people have similarities and differences and that it is ok to be unique. They are able to identify the characteristics of healthy and safe relationships.
- EYFS**  
Learners know what being unique means and that families can be different. They are able to identify some of the characteristics of healthy and safe relationships.